

NRDM

National Retail Data Monitor

a public health surveillance tool



NRDM Monthly Status Report 9/1/2003- 9/30/2003

October “meeting” during the Wednesday morning workshop at NYC Syndromic Conference

Due to high enrollment, there will be two identical sessions. The first runs from 8-10 AM EST Wednesday, October 22. The second runs from 10:30-12:30 AM EST. The dial in information:

1. Dial 1-888-246-8886
2. At the prompt, enter the passcode **3098605306** followed by the # sign
3. You will be prompted to record your name

The following tables summarize progress towards the projects’ goals:

- Increase market share coverage
- Get to UPC level data granularity (or market basket)
- Decrease data feed latency closer to real time
- See that data are reviewed on a daily basis
- Create a sustainable organizational model

I. User accounts: 223 total in 33 states plus DC, NYC, HHS, and CDC (compared to 210 total in 32 states in August)

State	Users	State	Users	State	Users
AR	1	MI	4	OR	1
CA	10	MN	1	PA	13
CT	2	MO	1	TN	4
DC	2	MT	1	TX	2
DE	1	NC	3	UT	28
FL	12	ND	1	VA	4
GA	1	NE	3	WA	5
ID	1	NH	3	WI	7
IL	4	NJ	27	WV	1
IN	6	NV	3	WY	1
KY	4	NY	9		
MA	5	OH	52		

Working Group

Pennsylvania
Joel A. Hersh, M.Ed. M.P.A.
Ohio
Robert J. Campbell, PhD
Georgia
Michael A. Coletta, MPH
New York
Carolyn J. Stetson, PhD
New Hampshire
Stephanie Miller, MPH

Founding Sponsor

Commonwealth of Pennsylvania

Sponsors

Indiana
Massachusetts
Michigan
New Hampshire
New Jersey
New York State
Ohio
Tennessee
Texas
Utah
Washington State
West Virginia
Wisconsin
Los Angeles County, CA
Louisville, KY
New York City, NY
San Diego, CA
Alfred P. Sloan Foundation

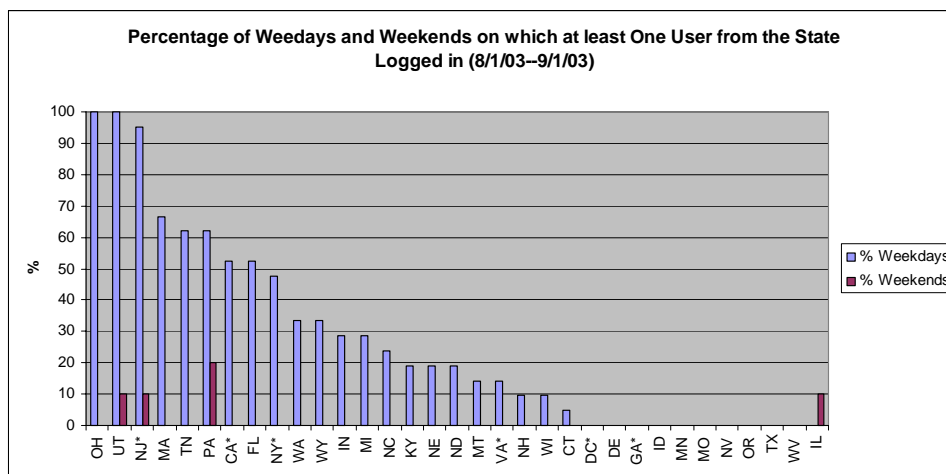
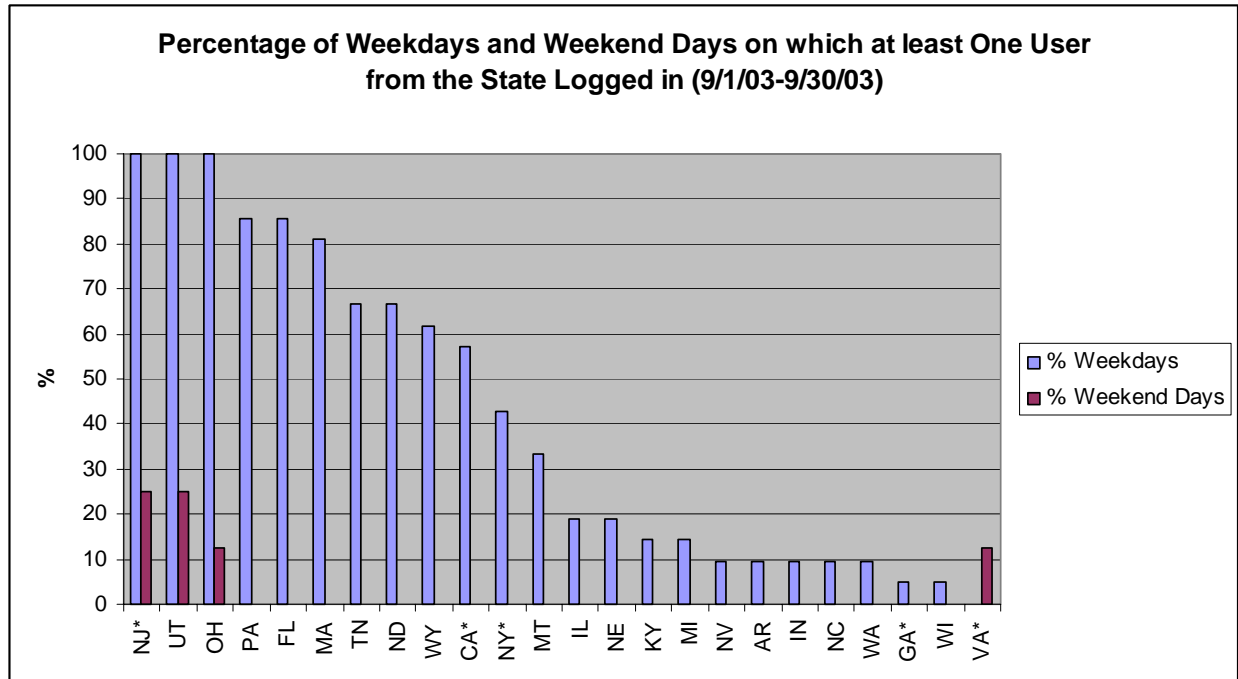
NRDM

National Retail Data Monitor

a public health surveillance tool



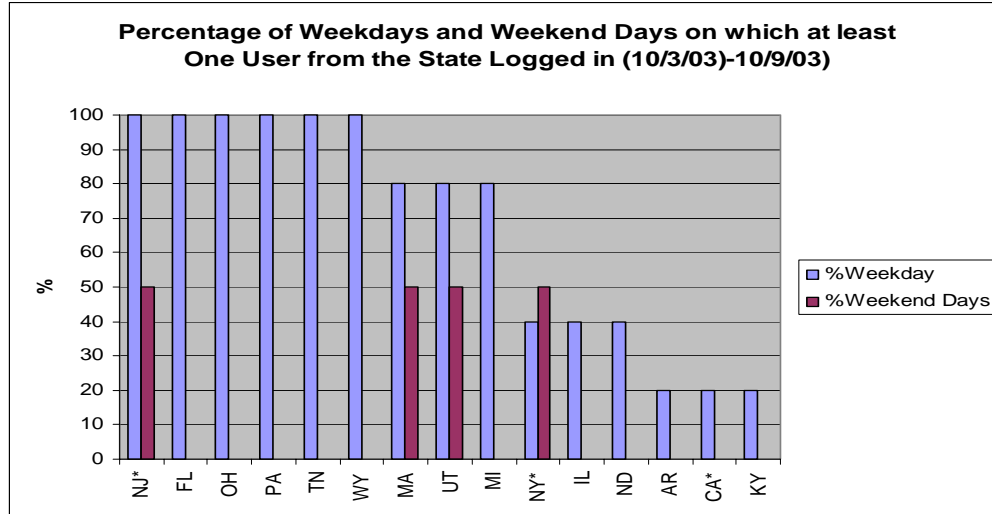
II. Usage of RODS Interface 9/1/03-09/30/03 (Usage chart from previous month also included to show change) Note that states denoted by * receives direct data feeds and therefore the interface usage figures may not fully reflect the extent of human review of the data.



N R D M

National Retail Data Monitor

a public health surveillance tool



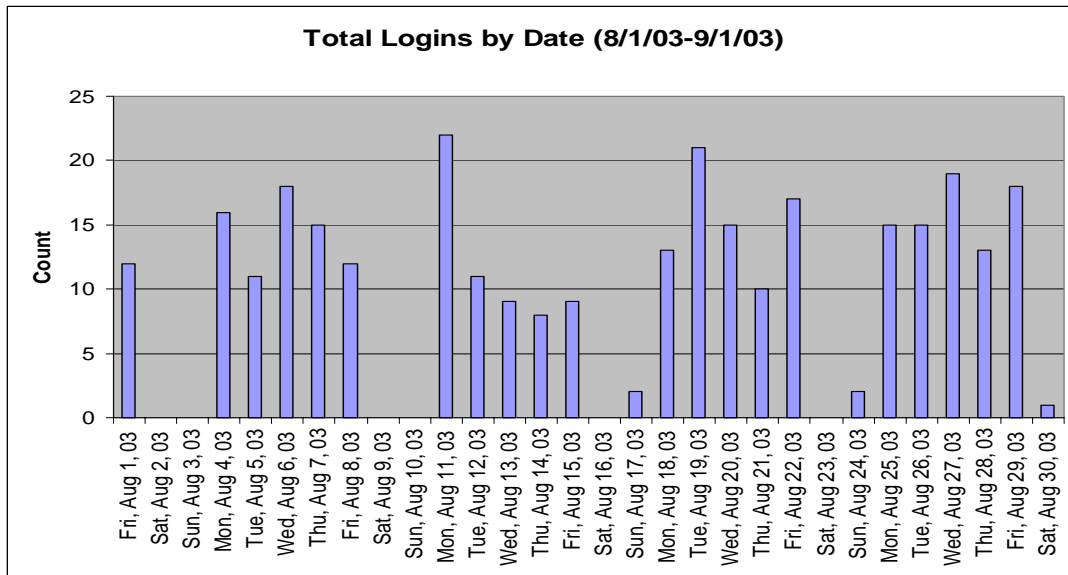
NRDM

National Retail Data Monitor

a public health surveillance tool



Usage Pattern in September by Day of Week (small inset is the previous month)



NRDM

National Retail Data Monitor

a public health surveillance tool



III. Status of Outbound Data Feeds

Data Feed Status		
Data Recipient	Status	Notes
CDC	In Production	Daily at 5p through ftp
New York State	In Production	Daily at 5p through email
New York City	In Production	Daily at 5p through ftp
New Jersey	In Production	Daily at 5p through email
JHU/APL (DC, VA, MD)	In Production	Daily at 5p through ftp
Georgia	In Production	Daily at 5p through ftp
California	In Production	Daily at 5p through email
Indiana	In Development	Recipient side problems with ftp
Norfolk	In Development	Recipient side problems with ftp
Montana	Awaiting secure server	

NRDM

National Retail Data Monitor

a public health surveillance tool



IV. Status of Retailers (participating retailers are not named at their request)

Retailer Status			
Retailer	Status	Notes	Stores
A	In production	UPC level data/ latency 1 day	>4,000
H	Went into production	UPC level data/latency 1 day	~4,000
B	In production	18 categories /latency 2 hours	~3,500
C	In production	18 categories/latency 1 day	~1,800
D	In production	18 categories/latency 1 day	~220
E	In development	Agreement signed, problem with FTP on Pitt side	~1,650
F	In development	UPC mapping issues, security review Data agreement to be signed when issues resolved	~2,600
G	In development	Data agreement signed, technical work awaits resources. Incommunicado, recently	~750
WalMart	Reopening discussion	20% market share nationwide.	(2454)
*Kroger	Declined “we were not a public health effort-FMI”	OH working group re-approaching. Stores in many states. (HQ in Ohio)	(2418)
Winn Dixie	Declined “we were not a public health effort-FMI”	FL working group leading effort. (HQ in Florida). Stores in AL, KY, GA, LA, MS, NC, OH, SC, TN, VA.	(1070)
*Albertson’s	Ongoing discussion	ID/MT working group leading effort. (HQ Idaho). Stores in most states.	(2300)
Supervalu	Ongoing discussion	HQ in Minnesota. In 40 states.	(2200)
*Safeway	Met at NACDS	CA working group leading effort HQ in CA, mostly in West (and MD).	(1700)
*DelHaize/Food Lion/Hannefords	Ongoing discussion about technical	NH working group leading this effort	(1200)
*Target	Approached 4/03 and 8/03 (before NACDS)	Alejandro Ulloa leading (FL),HQ Minnesota. Stores in almost every state.	(1100)
*Longs	Last discussion 6/11/03	CA working group leading effort. Pharmacies in CA, NE, OR, WASH, HI	(456)
A&P	Approached first 4/03	HQ in New Jersey.	(444)
HEB	Approached first 4/03	HQ in Texas	(300)
ShopKo	First contact NACDS	Asked us for spec sheet. HQ Green Bay WI. operated as ShopKo stores another 219 stores as Pamida	(360)
Brooks	First contact at NACDS meeting	Chad Lewis leading this effort. Stores in MA, RI, VT, NY, MN (HQ RI)	(330)
Wakefern	Approached first 4/03	HQ in New Jersey.	(190)
Wegmans	Still under consideration. Also met at NACDS 8/03	NY, PA. HQ NY Carolyn Stetson is leading	(64)
Kinney	First contact NACDS	Stores in NY and VT	(62)
Navarro	Approached at NACDS	Stores in Miami.	?
Kopp	First contact NACDS	Stores in Altoona PA. Hogan is spearheading	(12)
		Total Agreed	17,834
		Total Yet-to-agree	(16,648)

NRDM
National Retail Data Monitor
a public health surveillance tool



V. Funding (we are reintroducing this FYI item).

	Amount	Notes
Alfred P. Sloan Foundation	300K	July '03-August '04
Georgia	50K	Processing contract
New York State	50K	Thank you!
Ohio	50K	Legislative approval
Pennsylvania	200K	BT03 process
Utah	50K	Processing contract
Washington (State)	50K	Processing contract
TOTAL=>	\$750K	